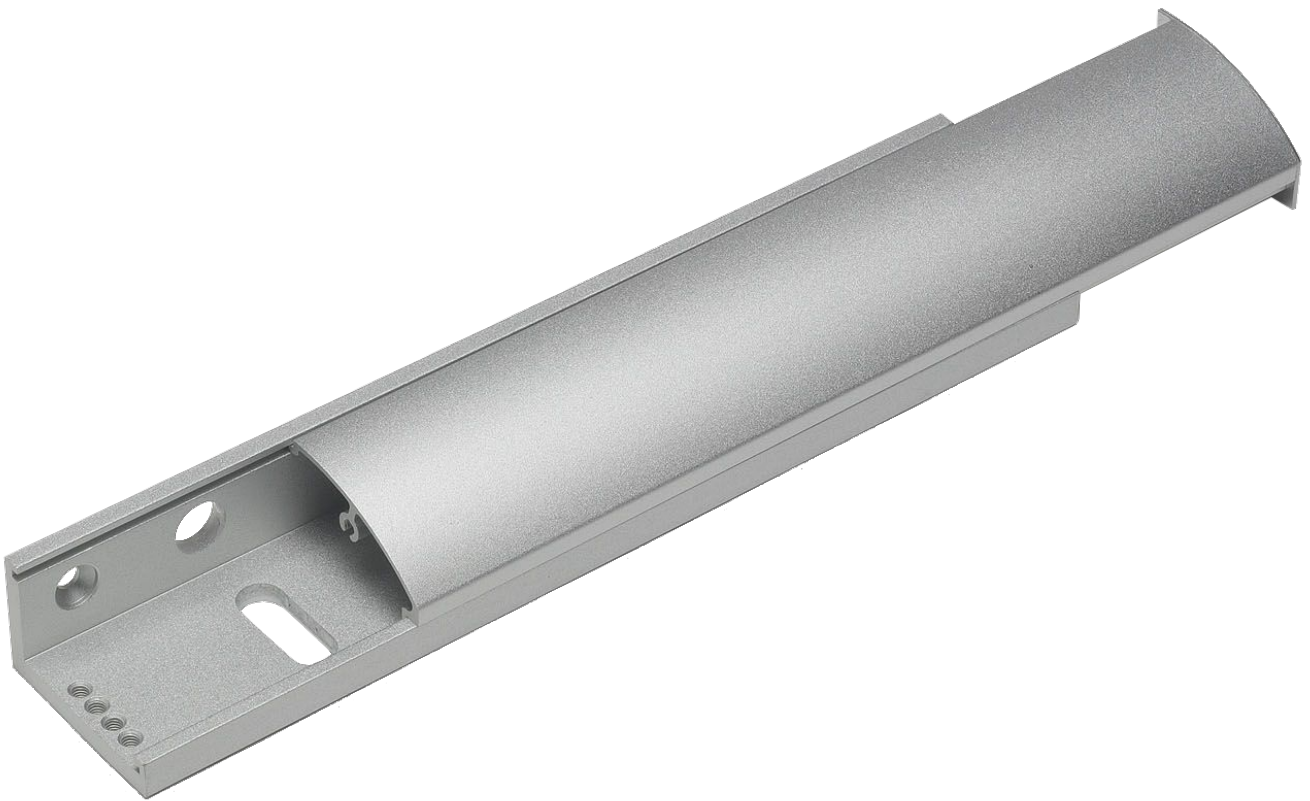




ICS Architectural L Bracket U300CL



Description

The U300CL from ICS is an architectural L bracket which is designed for use with ICS single mini magnets. It has an anodised aluminium construction and it is supplied with a cover. Only suits single slim magnets.

Features

- Aluminium construction
- Suits single mini magnets
- Supplied with cover

Product Table



L30065

U300CL