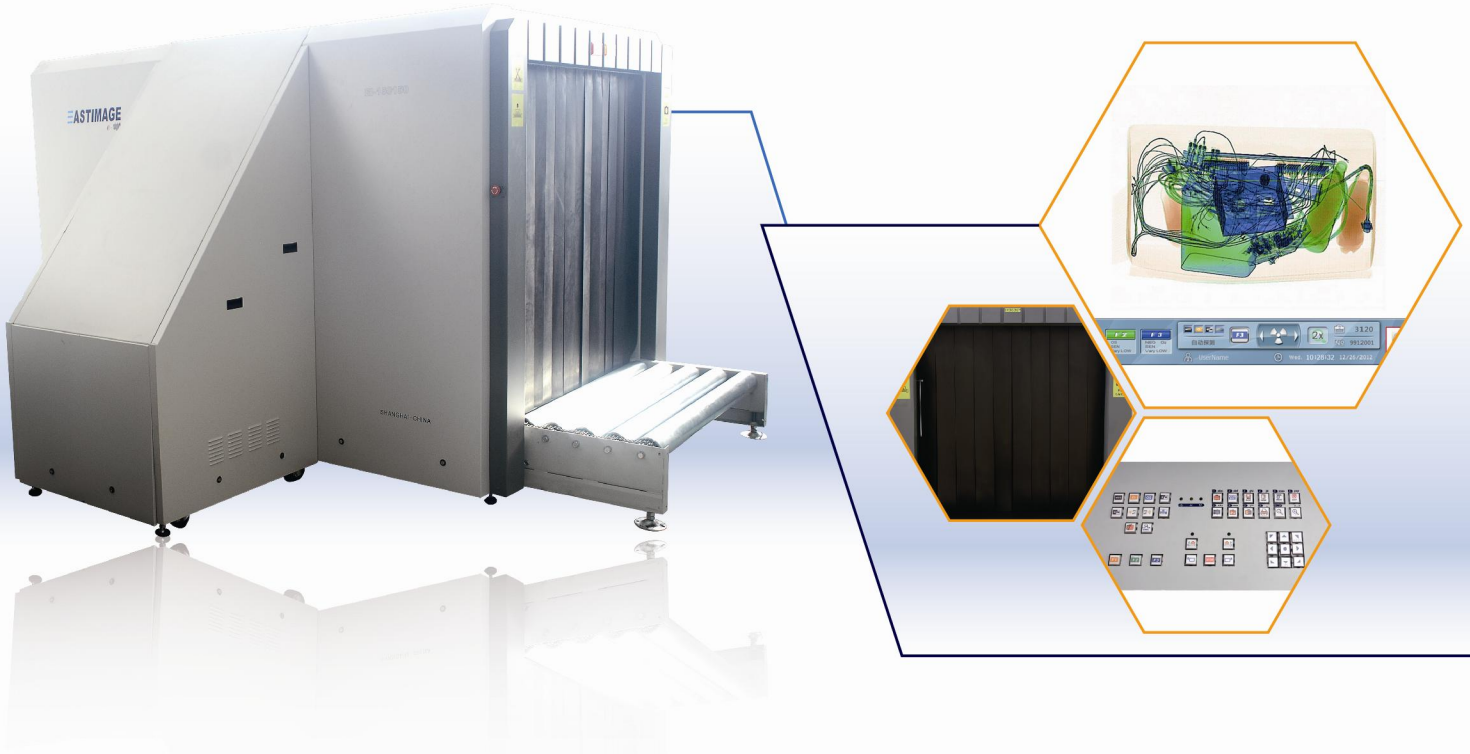


EI-V150150 Multi-Energy X-Ray Security Inspection Equipment



Product Instruction

EI-V150150 multi-energy X-Ray security inspection equipment able to detected the organic, norganic, mixtures or lightly metals precisely and quickly, simple and high efficient operation, reasonable human design. We provide a completely intelligent and safety inspection system for our customers.

Technology Features

- ◆ Shiny clear images
- ◆ Multi-Energy penetration system($\geq 40-43\text{mm}$)
- ◆ New X-Ray protection technology($< 1\mu\text{Gy/h}$)
- ◆ High- resolution (36AWG diameter 0.127mm tinned copper)
- ◆ Multi-functions image processing system
- ◆ EI-TIP (Threat Image Projection) function
- ◆ Any selection of the image magnified area
- ◆ Collection the high-speed parallel of detection data
- ◆ Removable split structure with independent console
- ◆ Support JPG & BMP image transformation format to USB
- ◆ High- resolution(36AWG diameter 0.127mm tinned copper)

Applications

- ◆ Airport
- ◆ Port
- ◆ Bus Station
- ◆ Logistics Warehouse
- ◆ Custom

General Specification

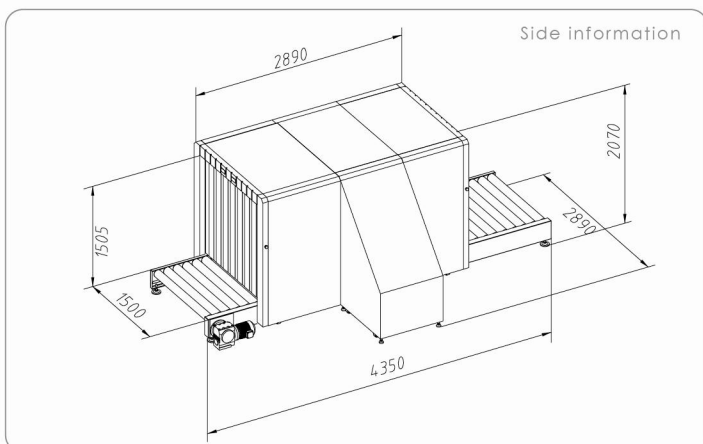
- Tunnel Size.....1500 mm (W) ×1505 mm (H)
- Conveyor Speed.....0.2m/s
- Conveyor High.....350 mm
- Max. Load.....2000kg (Evenly distributed)
- Resolution......36AWG (diameter 0.127mm tinned copper)
- Penetration......40mm steel (Guarantee) 43mm steel (Typical)
- Spatial Resolution.....Horizontal: Φ1.3 mm Vertical: Φ1.3mm
- Resolution......22"LCD 1920×1080

Image Processing System

- Display.....Colorful & Black and white
- Processing function.....F1/F2/F3 self-definition combination, edge enhancement, negative, the organic& inorganic excluding, high & low penetration, super enhancement, gray scale scan
- Saves Capacity & Pull back.....100,000 images / infinite review (the previous pictures)
- Resolution.....1680×1050
- Processing& Gray Scale.....24Bit real-time processing/4096
- Constituencies & Enlarge.....Any constituencies 1 ~ 32 multiple enlarge. full screen continuous check

X-Ray Generator

- Anode Voltage.....160 KV (adjustable)
- Beam Direction.....From the side
- Cooling & Running Cycle.....Sealed oil cooling & 100%
- X-Ray Sensor.....Multi-Energy L photoelectric diode array detector



X-Ray Security

- Single inspection dose rate.....< 2μGy
- Leakage.....< 1μGy/h (from the shell 5cm), according to the national and international safety standard
- Film Safety.....According to the ISO1600 (33DIN) high speed standard

System Function

- Date & Time display, Luggage Counting, System Working Timing, X-Ray Emission, Working Status Display, User Management, Fault Self-diagnosis and Maintenance Functions, Alarm Function, Urgent Stop, Limits of Authority Management for Operator, Self-check Power-on, Image Magnification Display, Save and Retrieval, Image Navigation, Bi-directional Scanning, Image Recognition Training, Network Interface, Browse, Save As, Plication.

Optional Function

- High Density Area Alarm, TIP Threat Image Projection, X-Auto Sight Contraband Auxiliary Recognition System, OTP Operator Training Program, One Key to Shutdown, Environment Protection and Energy Saving.

Installation Data

- Size.....4350mm (L) x 2890 mm (W) x 2070 mm (H)
- Weight3000 KG
- Working Temperature / Humidity.....0°C ~ + 45°C / 20% ~ 95% (non-condensing)
- Storage Temperature / Humidity.....- 40°C ~ + 60°C / 20% ~ 95% (non-condensing)
- Power Supply.....AC 380V (+10%~-15%)
- Power Consumption.....About 2.3 (KVA)

Remark: above data base on National standard GB15208.2

Safety Standard

According to the national standard of the People's Republic of China GB15208.1-2005

The copyright belongs to EastImage Equipment Co. Ltd Shanghai, China, Our products have domestic and international patents, must be strictly investigate if any parties copy the design and technology in future



Our company has won QMS "ISO9001: 2008", EMS "ISO 14001:2004", OHSMS "GB/T28001-2011". EI-V150150 won "EU CE certification", "U.S.A FCC certification"



Shanghai Eastimage Equipment Co., Ltd.

Address: No.111, Zhiye Road, Pudong New District, Shanghai, P.R. China Post code: 201200

Tel: +86 21 33909300

E-mail: sales@eastimage.com.cn

Fax: +86 21 58545890

Http: //www.eastimage.com.cn